

Item Name : Muscular Torso Dual-Sex Open Back 28 Parts

Item Code : 4022.2008.01

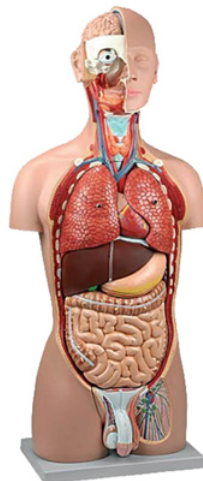
Item Description :

This life which open back is composed of 28 partes and provides an exceptionally realistic reproduction of anatomical structures in their finest detail. All of the body system are represented with fully accessibility. The left side exposes all significant superficial and deeper muscles with vessels and bones. The open back shows muscular layers as well as the vertebral column and associated nerve branches. A thoracic vertebra, including a section of spinal cord, is removable for close examination of its anatomical details. The head is open and the brain is fully exposed on one side. The neck is dissected to expose muscular, neural, vascular and glandular structures. Significant features are numbered and referenced on the accompanying key card. The dissectible male and female urogenital systems are interchangeable.

Removable structures include the following:

- Eye with optic nerve and extraocular muscles
- Half of the brain, divided along the longitudinal fissure, showing internal structures and blood vessels trachea
- Descending thoracic aorta and esophagus
- Right and left lungs (2 parts each), showing the bronchial tree and vasculature
- Chest cover • Mammary gland • Liver with gallbladder
- Half of one kidney sectioned along the frontal plane, showing the internal structure and vessels
- 2-part heart with clear depiction of atria, ventricle, valves and section of heart wall
- Stomach dissected in 2 parts
- Pancreas, duodenum and spleen with vessels and ducts
- Small and large intestines with removable cover portion of caecum
- Male urogenital system (4 parts)
- Female urogenital system (3 parts) including embryo
- Thoracic vertebra (t12) with spinal cord.

Item Image :



Cat. No.

4022.2008.01

44, Vikas puri, P.O.Ind.Estate, Jagadhri Road,
A/Cantt-133 006. Haryana, India.

+0171 – 2698107

info@glacierindia.com

<https://www.glacierindia.com>