

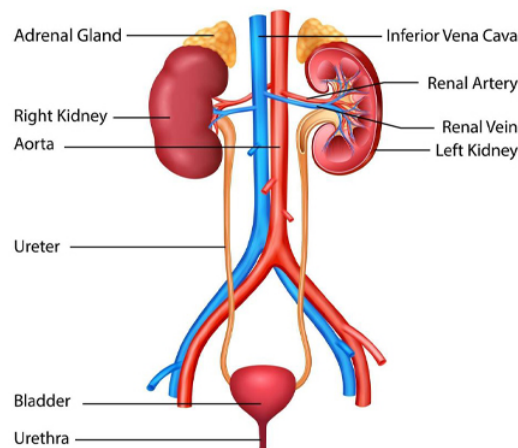
Item Name : Human Urinary System

Item Code : 4230.2008.01

Item Description :

- a. Kidneys- Kidneys are two bean shaped organs lying close to the lumbar spine on either side, they are multifunction organ, form urine and control its concentration
 - b. Ureters- Two hollow muscular tubes one arising from each kidney and ending at the urinary bladder, connect kidneys to the bladder
 - c. Urinary- Bladder-Stores urine before it is excreted from the body, hollow muscular and distensible organ, sits on the pelvic floor.
 - d. Urethra- A tube connecting the urinary bladder to the genitals for excretion
- Functions-Excretion of nitrogenous wastes, Osmoregulation, Acid-Base balance

Item Image :



URINARY SYSTEM

Cat. No.

4230.2008.01