

Item Name : Digestive System

Item Code : 4229.2008.01

Item Description :

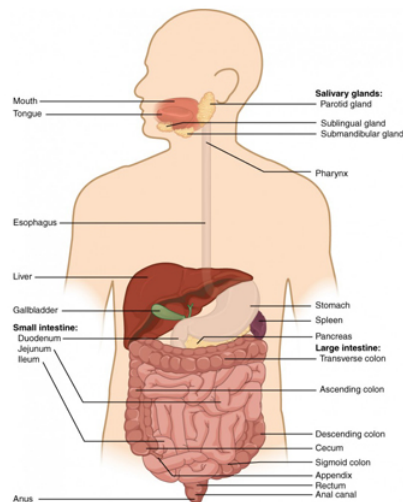
1. Necessary Organs

- a. Oral cavity- It is the cavity of mouth, irregular in shape, contains tongue, teeth and salivary glands,
- b. Esophagus-Muscular tube passing the food from pharynx to stomach
- c. Stomach-Muscular, hollow and dialted part of alimentary canal, involved in both mechanical and chemical digestion of food, secretes strong acid and enzymes to aid in digestion of food
- d. Small Intestine-Lies between stomach and large intestine, majority of digestion and absorption takes place here, About 5 meters in length
- e. Large Intestine-Second-to-last part of alimentary canal, main function is to absorb water from indigestible food.
- f. Anus-Last part of alimentary canal, opens to outside for ejection of food, Controls the expulsion of feces

2. Accessory Organs a. Liver-Produces bile for emulsification of fats

- b. Pancreas-Secretes pancreatic juice containing different digestive enzymes into the small intestine
- c. Teeth- Chewing and mastication of food
- d. Tongue-Rolling and lubrication of food

3. Functions- Digestion and absorption of food



Item Image :

Cat. No.

4229.2008.01

44, Vikas puri, P.O.Ind.Estate, Jagadhri Road,
A/Cantt-133 006. Haryana, India.

+0171 – 2698107

info@glacierindia.com

<https://www.glacierindia.com>