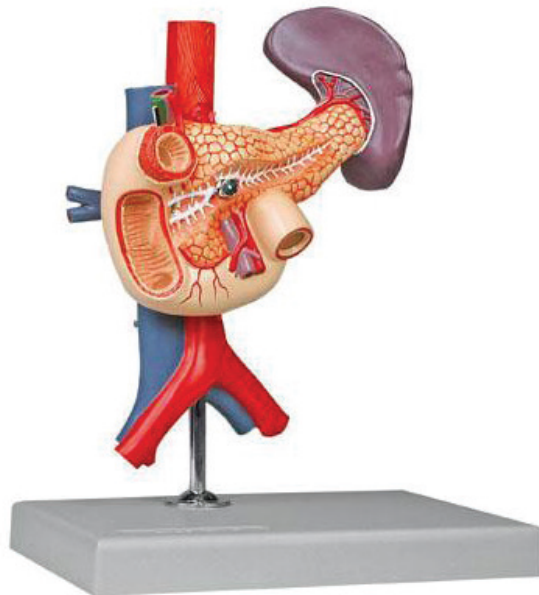


Item Name : Stomach and Associated Organs of the Upper Abdomen 6 Parts

Item Code : 4197.2008.01

Item Description :

This life size model has the following features, 2-part stomach along with the pancreas, spleen and duodenum (shown in open section), gallbladder with bile ducts, abdominal aorta, vena cava, mesenteric and iliac vessels. 2 sections of the liver-gallbladder are interchangeable.



Item Image :

Cat. No.

4197.2008.01