

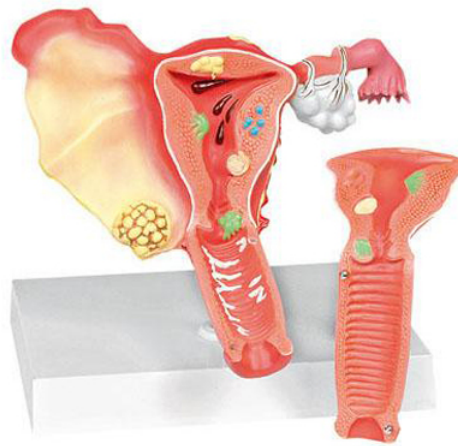
**Item Name :** Pathological Model of Female Reproductive System

**Item Code :** 4132.2008.01

**Item Description :**

This life size model, sectioned along the front plane and divided into 2 pieces, shows the most important pathologies of the female reproductive system. The model includes endometrial carcinoma and carcinoma of the cervix. Additional pathologies include polyps of the uterus, salpingitis, oophorocystosis, endometriosis, and pelvic inflammatory disease.

**Item Image :**



Cat. No.

4132.2008.01