

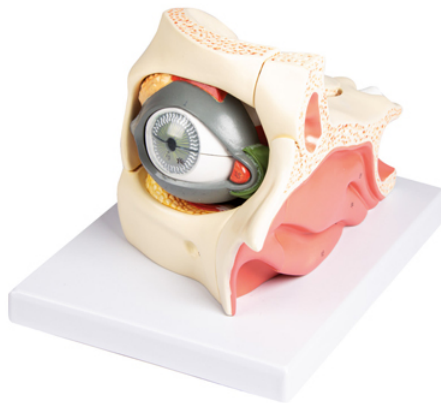
Item Name : Eye in Orbit with Eyelid

Item Code : 4072.2008.01

Item Description :

This 13-part model, enlarged approximately 2,5X life-size, shows the anatomy of the human eye. The orbit can be opened into 3 parts to reveal the internal structures: - eyelid with lacrimal gland and duct - muscles 4 parts - eyeball dissected in 2 removable halves - cornea, iris, lens and vitreous body 3 parts.

Item Image :



Cat. No.

4072.2008.01