

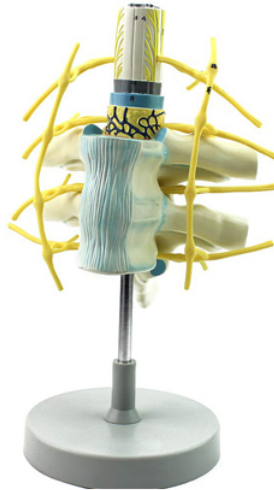
**Item Name :** Thoracic Vertebrae With Spinal Cord

**Item Code :** 4062.2008.01

**Item Description :**

2X life size, 2 thoracic vertebrae with rib ends and costovertebral articulations are included. The spinal cord is sectioned trasversely, showing details of the grey and white matter, spinal nerve branches and the spinal ganglia. This midel highlight the communication between sympathetic trunk and spinal column, through sympathetic ganglion and spinal ganglion, connected by white and grey communicating branches.

**Item Image :**



Cat. No.

4062.2008.01